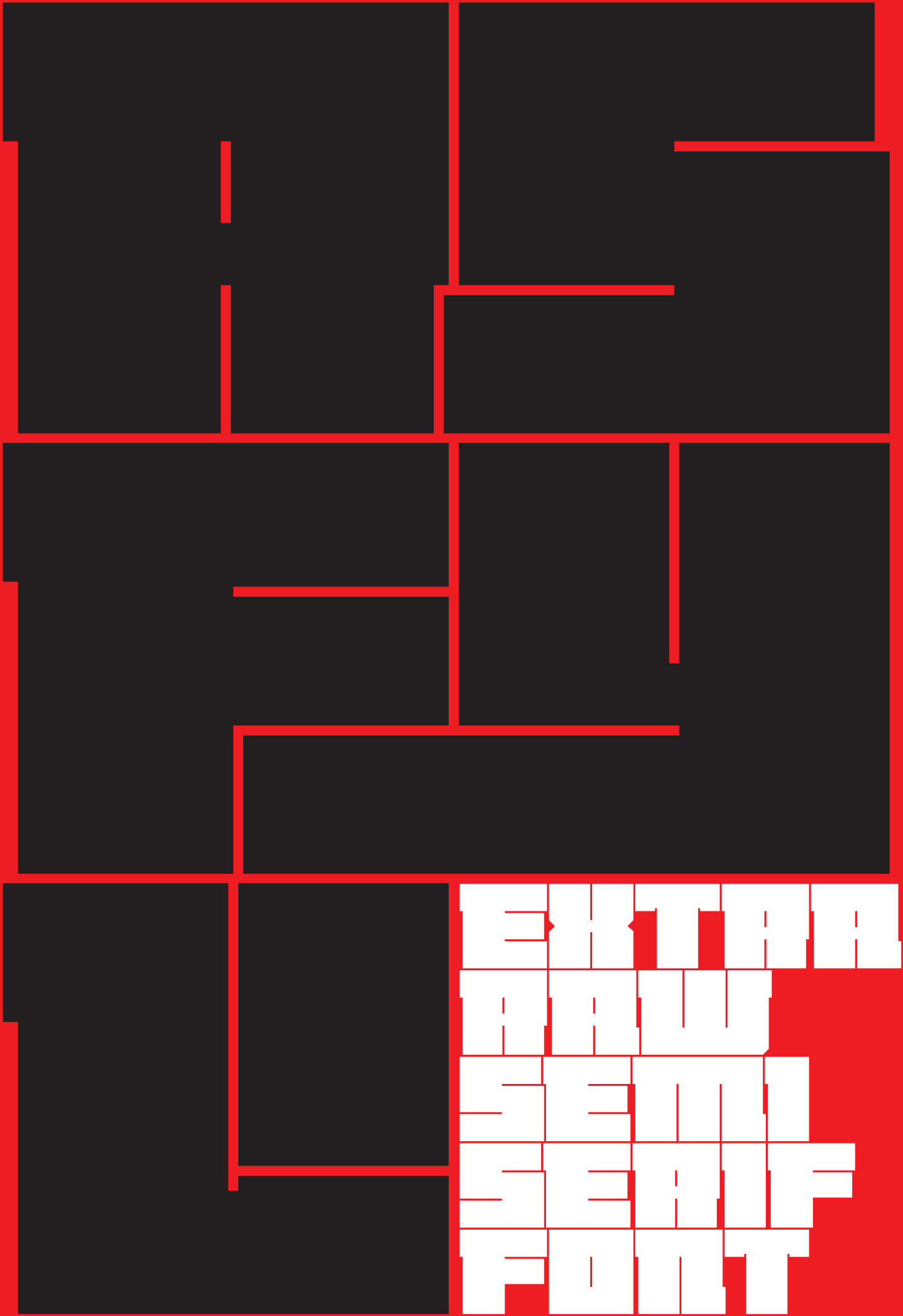


ARADONTYPE  
TYPE SPECIMEN



# ARQTYPE

---

## Mayusculas monolíticas

ArqType es una tipografía display semi serif inspirada por la arquitectura brutalista de los años cincuenta y sesenta. Su aspecto solido y cuadrado recuerda los edificios y los materiales típicos de este movimiento arquitectónico y cultural. La ausencia de adornos, el extremo contraste entre blancos y negros y los encajes entre las formas constituyen una deliberada citación del principal elemento del Brutalismo: el hormigón.

Esta fuente fue diseñada para generar densos bloques de letras y infranqueables paredes de textos.

## Monolithic uppercase

ArqType is a semi serif display typeface inspired by brutalist architecture from the Fifties and the Sixties. Its solid and squared appearance reminds to the classic buildings and materials of this architectural and cultural movement. The absence of decorations, the hard contrast between black and white and the interlocking between letters create a clear mention of the main element in Brutalism: the cement.

This font was designed to build thick letter blocks and insurmountable walls made by text.

Mayúsculas:

A B C D E F G H I J K L M  
N O P Q R S T U V W X Y Z

Números:

0 1 2 3 4 5 6 7 8 9

Signos:

! " # \$ % & ' ( ) \* + , - . / : ;  
< > [ \ ] ^ \_ ` { | } ~ ¡ ¢ £ ¤ ¥ ¦ § ¨ © ª « ¬ ® ¯ ° ± ² ³ ´ µ ¶ · ¸ ¹ º » ¼ ½ ¾  
¿

Acentos:

À Á Â Ã Ä Å Æ Ç È É Ê Ë  
Ì Í Î Ï Ñ Ò Ó Ô Õ Ö × Ø Ù Ú Û Ü Ý Þ  
ß à á â ã ä å æ ç è é ê ë  
ì í î ï ð ñ ò ó ô õ ö ÷ ø ù  
ú û ü ý þ ÿ

Ligaduras:

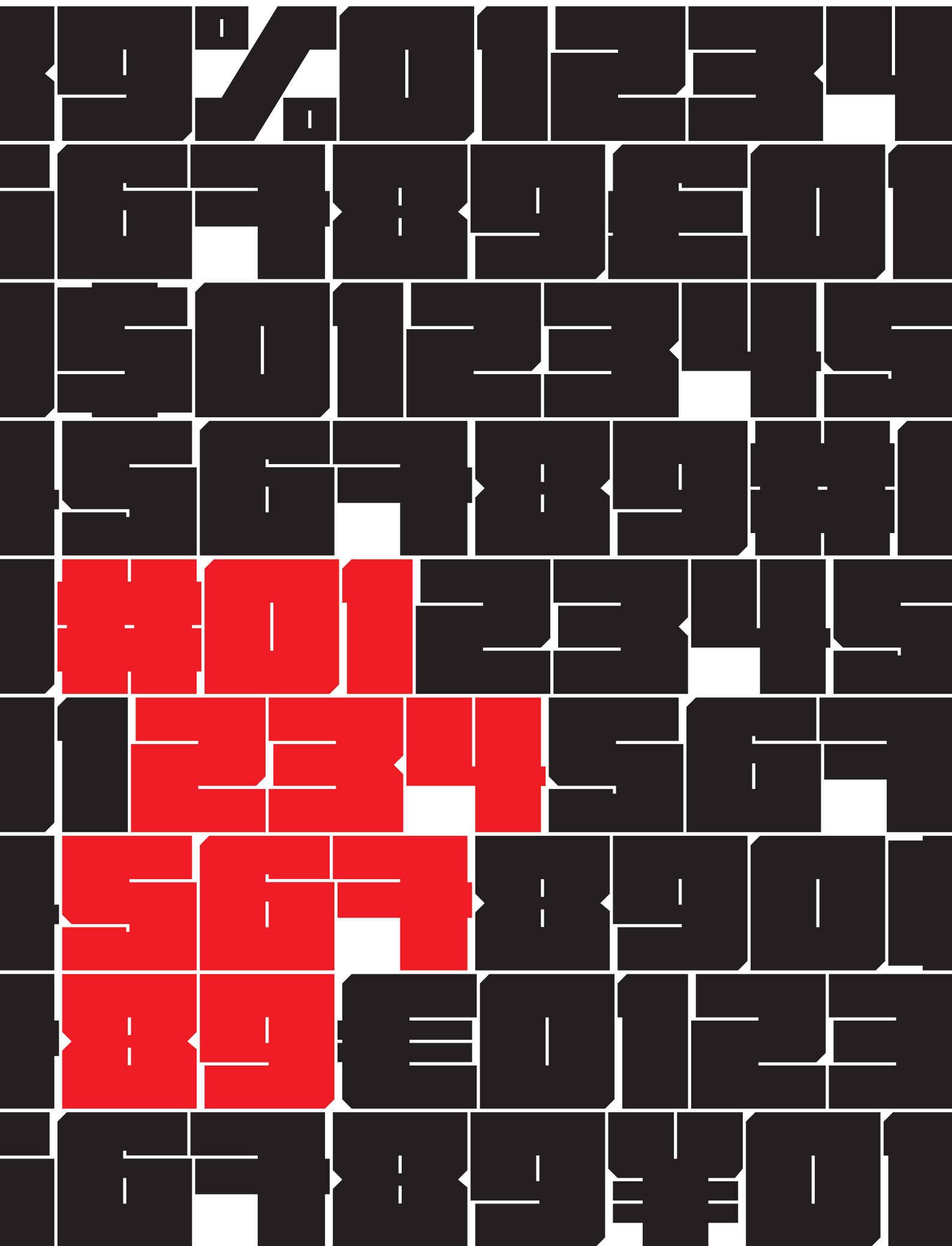
<b>AE</b>	—	<b>AE</b>	<b>AI</b>	—	<b>AI</b>
<b>FI</b>	—	<b>FI</b>	<b>AS</b>	—	<b>AS</b>
<b>FS</b>	—	<b>FS</b>	<b>AV</b>	—	<b>AV</b>
<b>FU</b>	—	<b>FU</b>	<b>AS</b>	—	<b>AS</b>
<b>IJ</b>	—	<b>IJ</b>	<b>AV</b>	—	<b>AV</b>
<b>HS</b>	—	<b>HS</b>	<b>ST</b>	—	<b>ST</b>
<b>HY</b>	—	<b>HY</b>	<b>TJ</b>	—	<b>TJ</b>
<b>LI</b>	—	<b>LI</b>	<b>TS</b>	—	<b>TS</b>
<b>LT</b>	—	<b>LT</b>	<b>TU</b>	—	<b>TU</b>
<b>OE</b>	—	<b>OE</b>			

Alternates:

**Q W R**

BRUTALIST ARCHITECTURE  
FLOURISHED FROM THE  
1950S TO THE MID-1970S,  
DESCENDING FROM THE  
MODERNIST  
ARCHITECTURAL  
MOVEMENT OF THE EARLY  
20TH CENTURY. THE TERM  
ORIGINATES FROM THE  
FRENCH WORD FOR "RAW",  
AS LE CORBUSIER  
DESCRIBED HIS CHOICE OF  
MATERIAL, BÉTON BRUT,  
MEANING RAW CONCRETE  
IN FRENCH. ARCHITECTS  
ALISON AND PETER  
SMITHSON ARE BELIEVED  
TO HAVE COINED THE  
TERM "BRUTALISM" IN THE  
1950S AND IT BECAME  
MORE WIDELY USED  
AFTER BRITISH  
ARCHITECTURAL CRITIC  
REYNER BANHAM TITLED  
HIS 1966 BOOK, THE NEW  
BRUTALISM, USING THE  
TERM "BRUTALISM" TO  
IDENTIFY THE STYLE.

EXTRAORDINARY  
SEMI-SERIF TYPE  
AVAILABLE IN 12 POINT  
AND WHITE LETTER  
BEAUTIFUL  
HOWEVER  
WHITE ON WHITE  
LETTERS  
WHICH  
ROYAL NATIONAL THEATRE  
BRANDISH CAN GET  
LITTLE  
TOWNS WELLS  
COMING  
BRANDISH





THE TEAM "BRUTALISM" WAS ORIGINALLY COINED BY THE SWEDISH ARCHITECT HANS ASPLUND TO DESCRIBE VILLA GÖTH IN UPPSALA, DESIGNED IN 1949 BY BENGT EDMAN AND LENNART HOLM. HE ORIGINALLY USED THE SWEDISH-LANGUAGE TERM NYBRUTALISM (NEW BRUTALISM), WHICH WAS PICKED UP BY A GROUP OF VISITING ENGLISH ARCHITECTS, INCLUDING MICHAEL VENTURI, IN ENGLAND. THE TERM WAS FURTHER ADOPTED BY ARCHITECTS ALISON AND PETER SMITHSON. THE TERM GAINED WIDE CURRENCY WHEN THE BRITISH ARCHITECTURAL HISTORIAN REYNOLDA BANHAM USED IT IN THE TITLE OF HIS 1966 BOOK: "THE NEW BRUTALISM: ETHIC OR AESTHETIC?"



**PROTOTYPE**

T Y P E S P E C I M E N